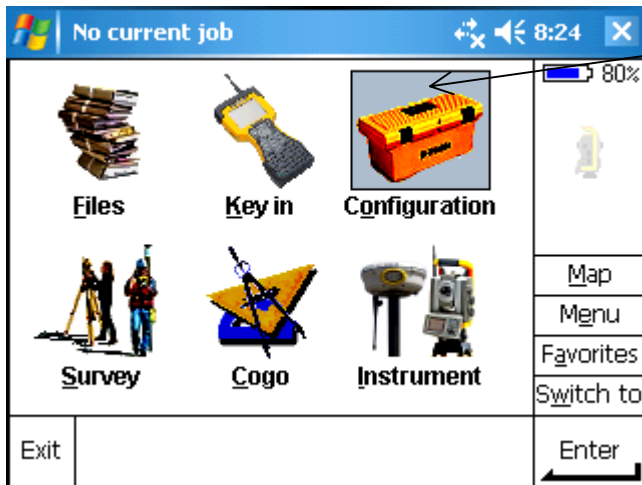


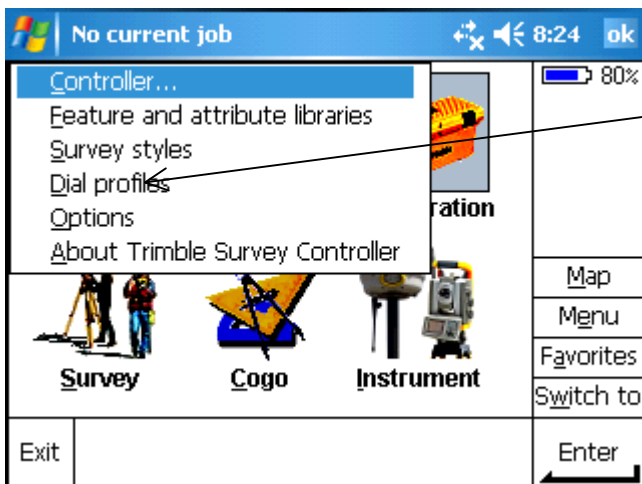
► Survey Controller VRS Settings



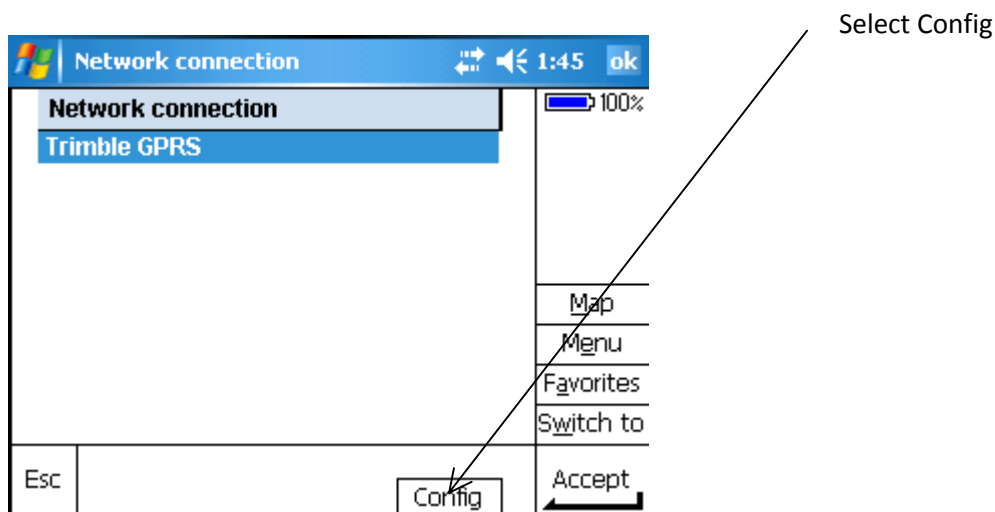
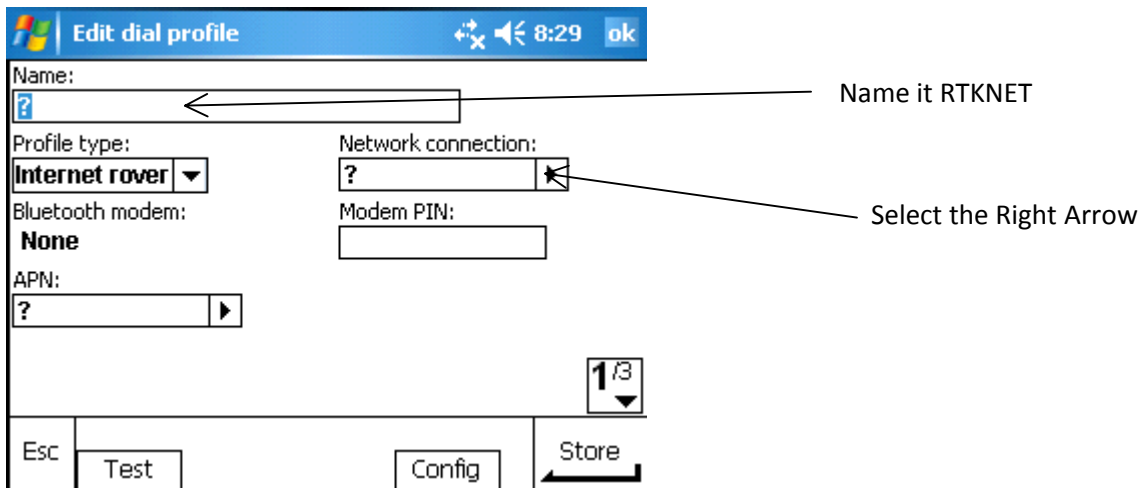
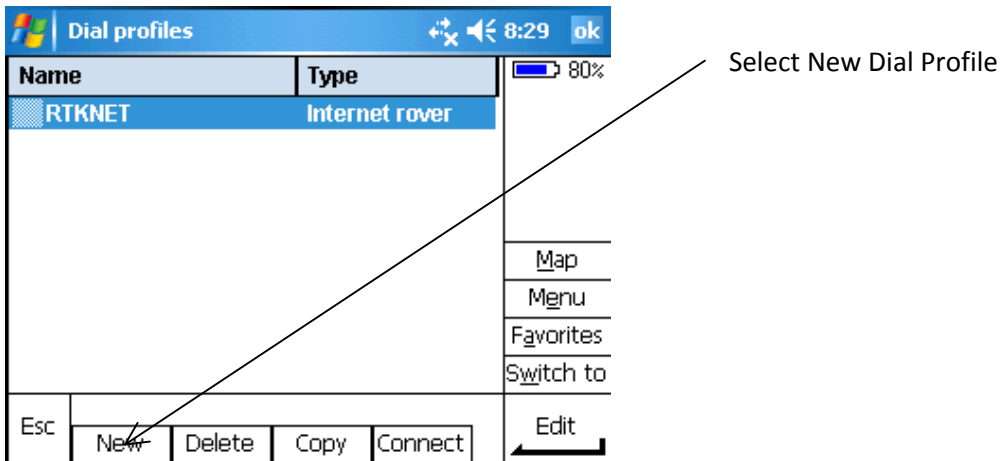
Select Survey Controller



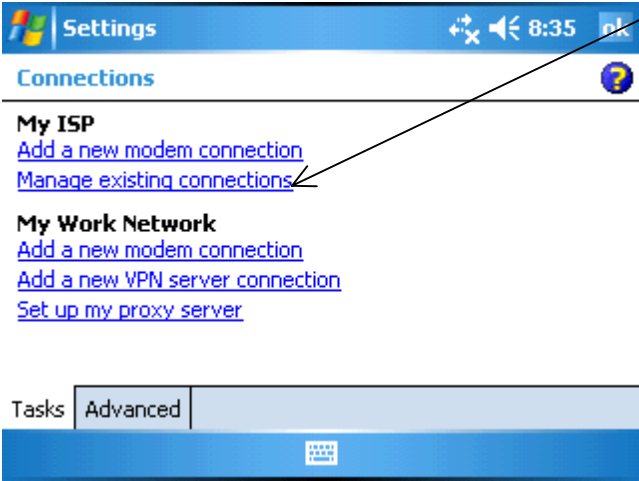
Select Configuration



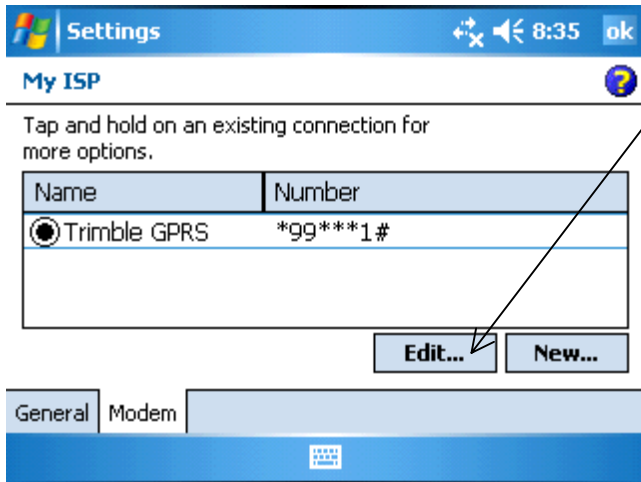
Select Dial Profile



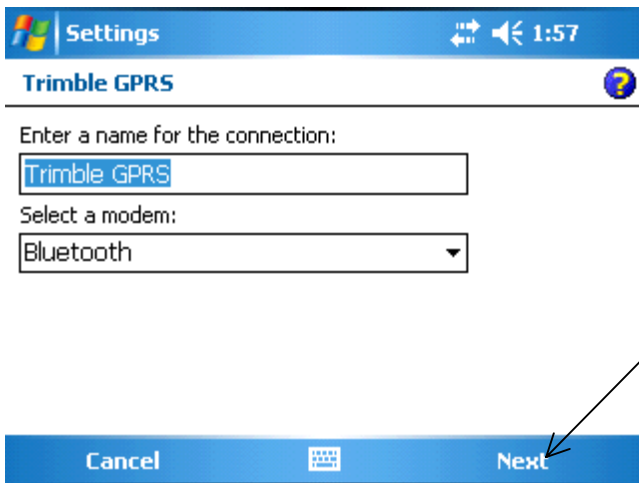
Select Manage Existing Connections



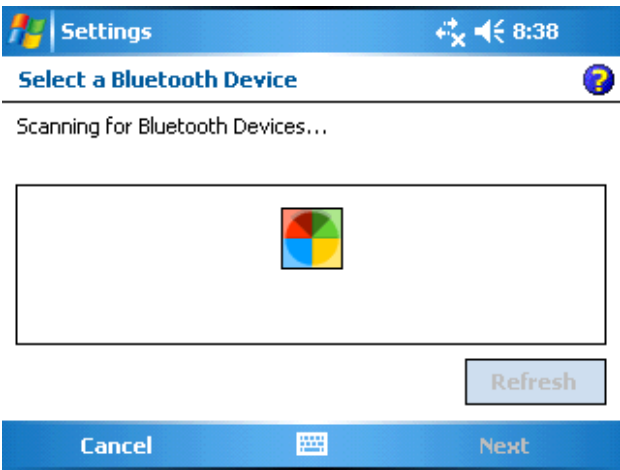
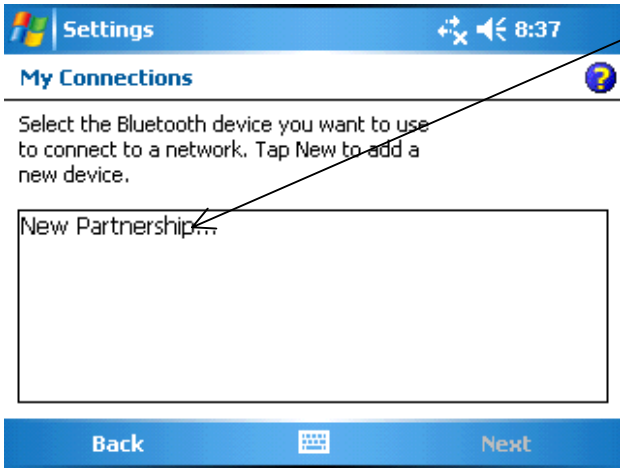
Select Edit



Select Next

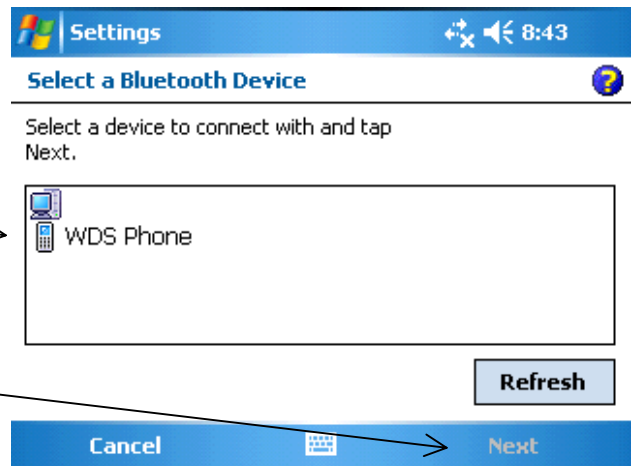


Make sure your phone is discoverable and
Select New Partnership



Select Your Phone

Select Next



Enter Passkey

Enter a passkey to establish a secure connection with WDS Phone.

Enter 1 here and also on phone

Passkey:

Enter Passkey

Enter a passkey to establish a secure connection with WDS Phone.

Passkey:

Partnership Settings

Display Name:

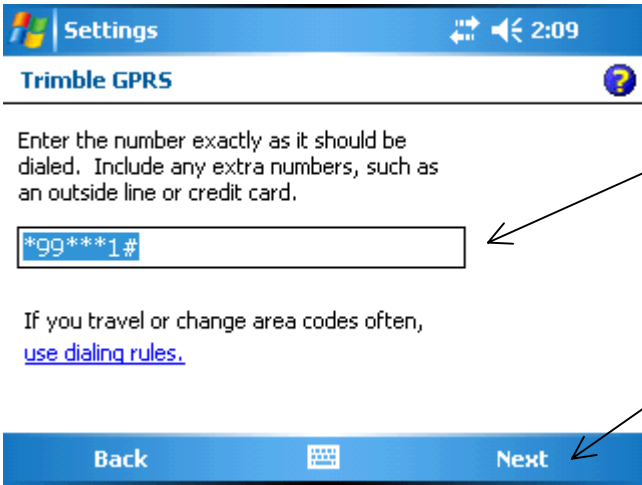
Phone Name will appear

Select services to use from this device.

Dialup Networking

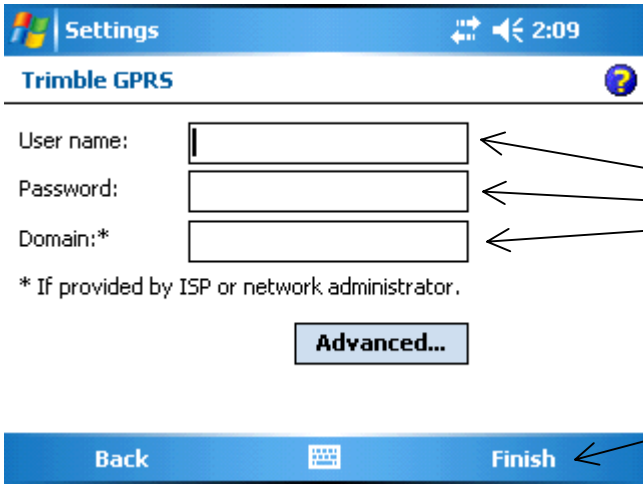
Finish and OK at Top

Refresh



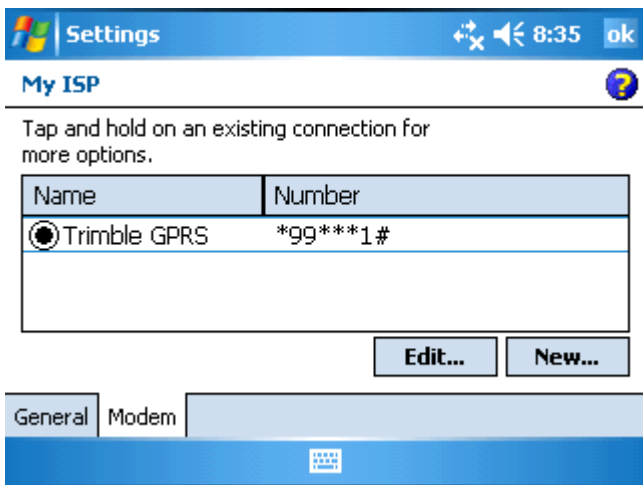
Leave the number as *99***1#

Select Next

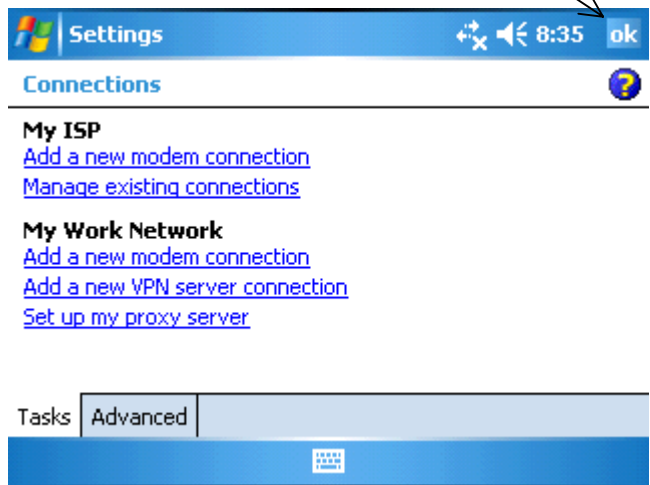


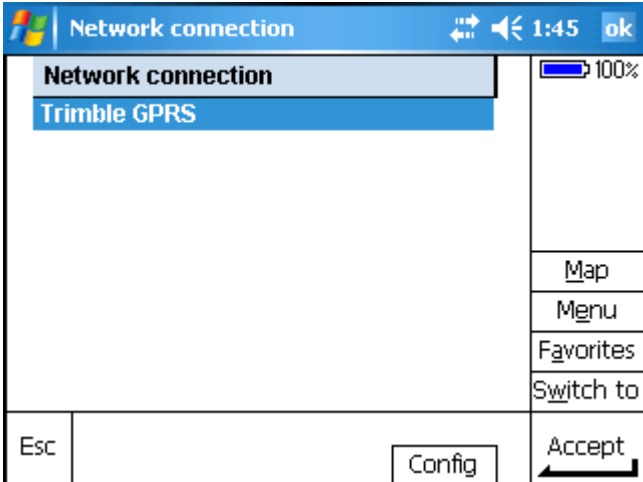
Leave Blank

Select Finish

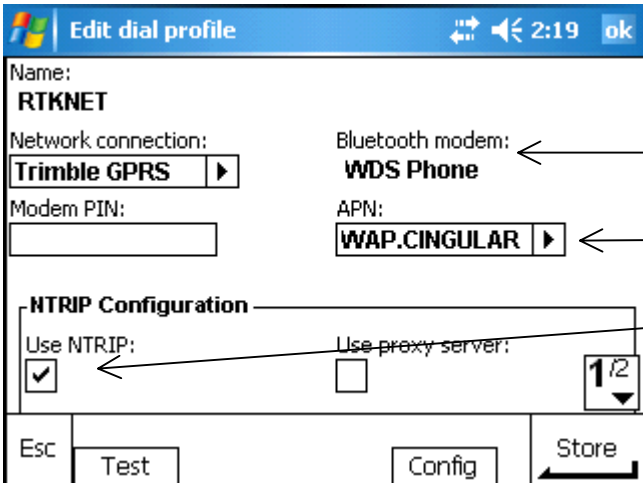


Select OK





Select Accept

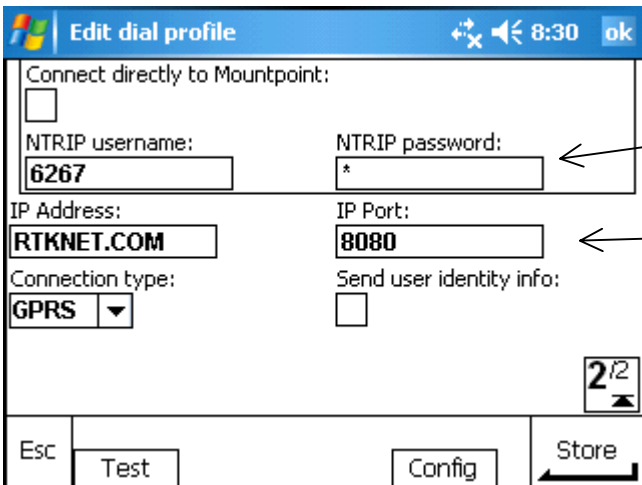


Your Phone Name will appear

Type WAP.CINGULAR for APN

Use NTRIP should be Checked

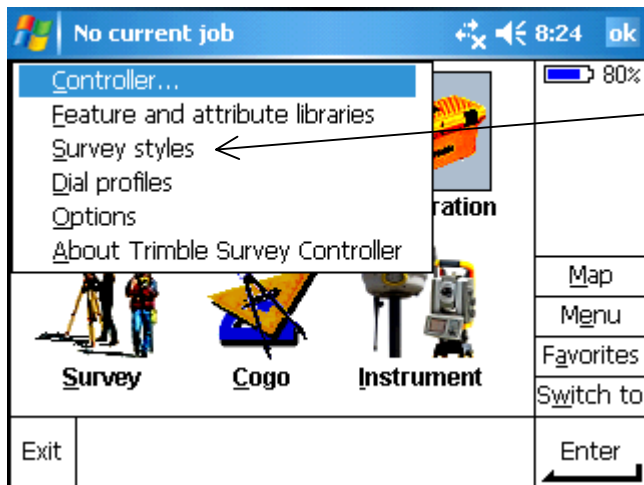
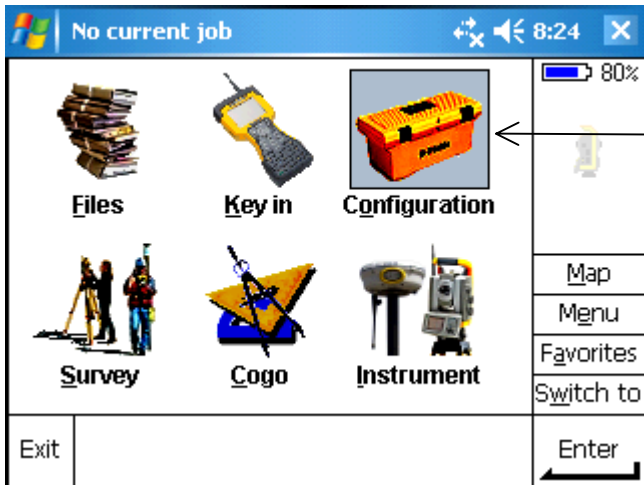
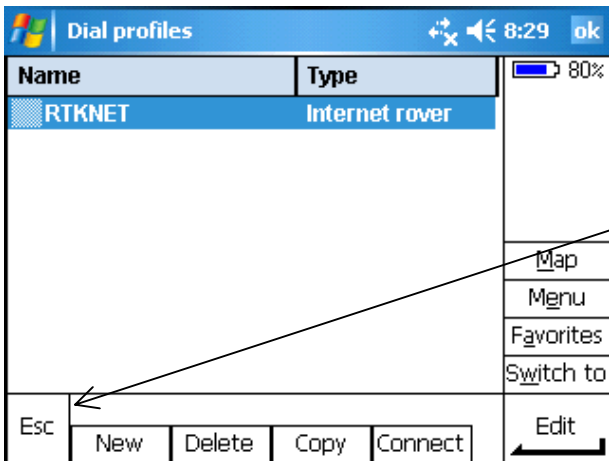
Select Page 2

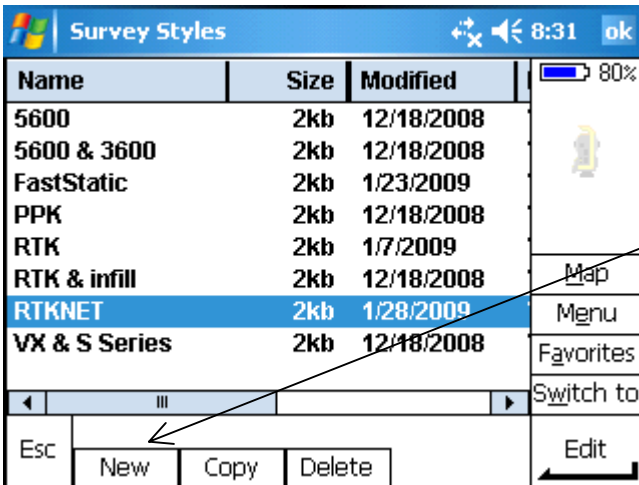


Type in Your Username & Password

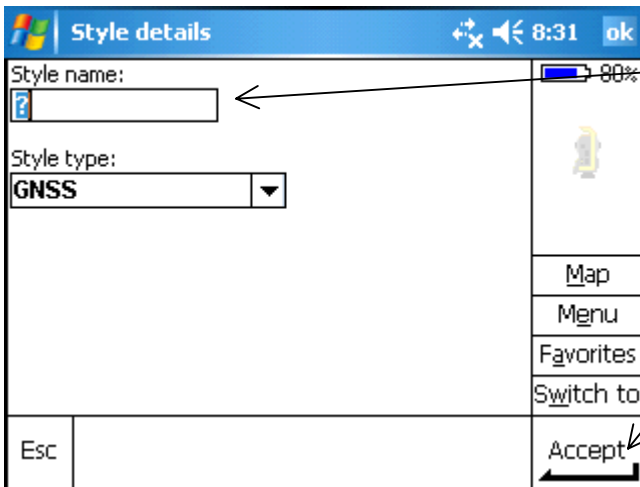
Type RTKNET.COM for IP Address
Type 8080 for IP Port

Select Store



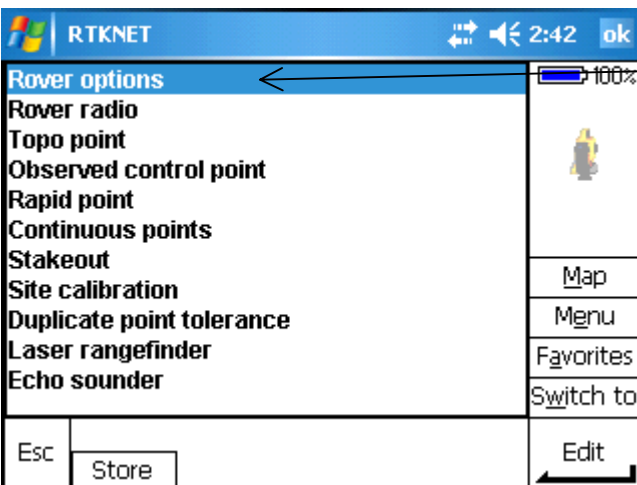


Select New Survey Style

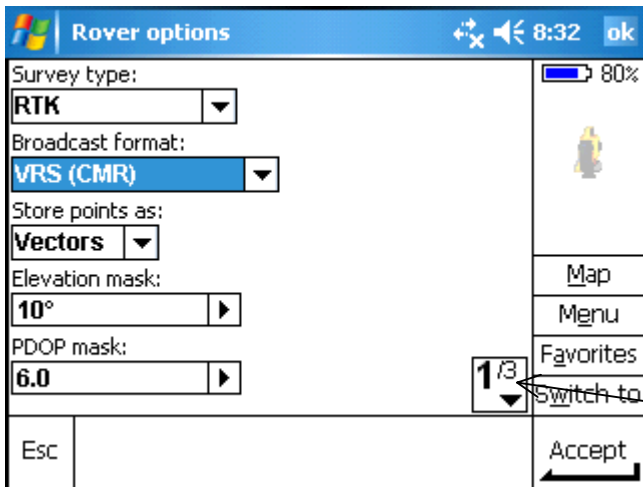


Type RTKNET

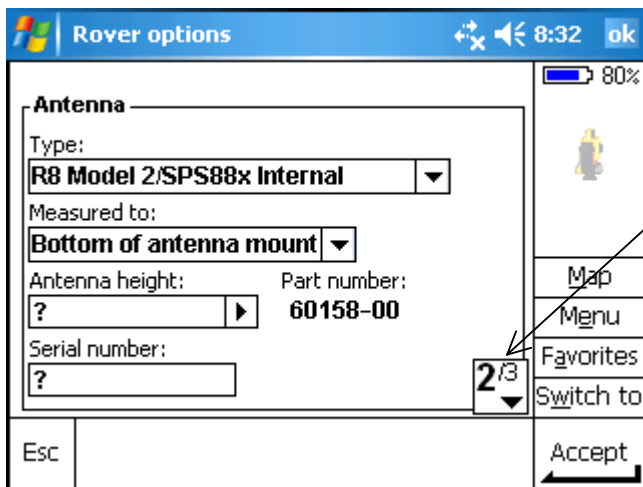
Accept



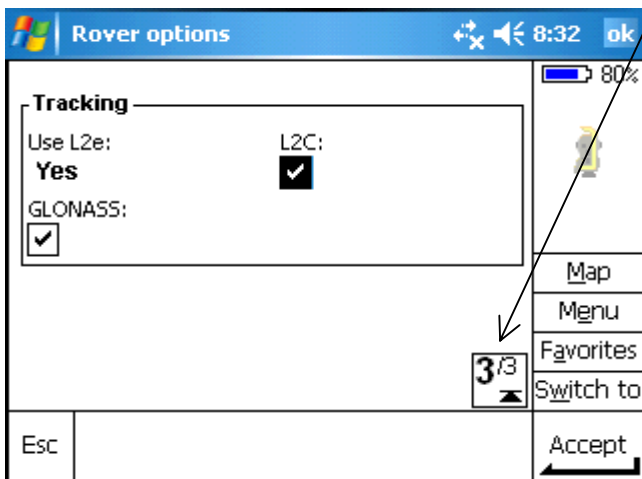
Select Rover Options

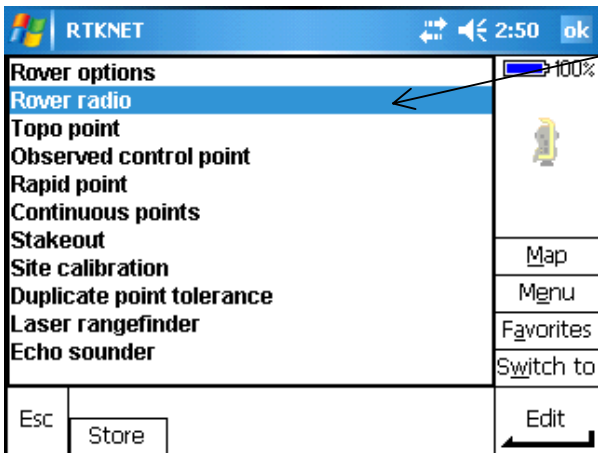


Set to these settings

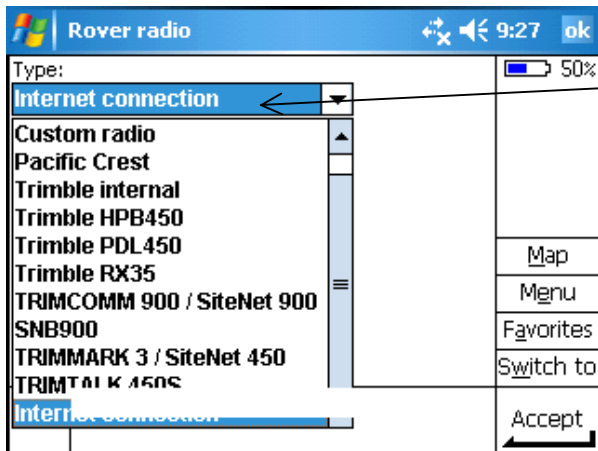


Select Accept

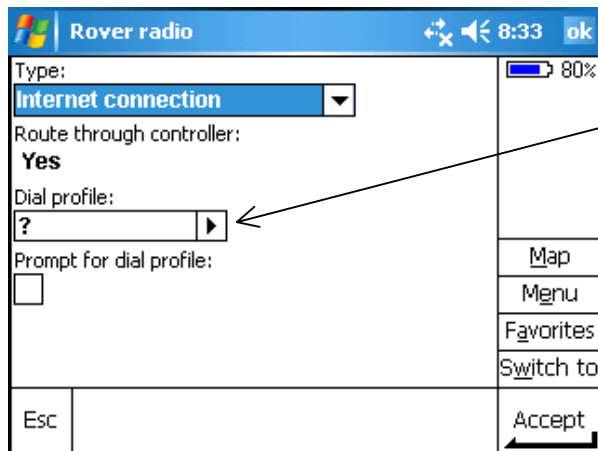




Select Rover Radio



Select Internet Connection



Right Arrow & Select RTKNET
Select Accept

Select Store

