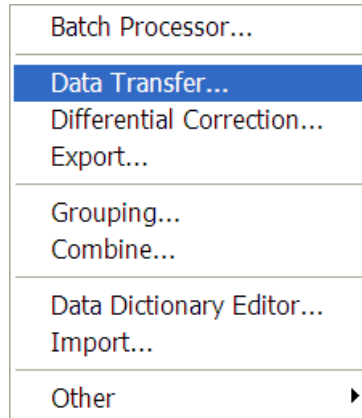


Data Transfer using GIS Folders containing raw data

Save data to a file on PC.

Set up data transfer

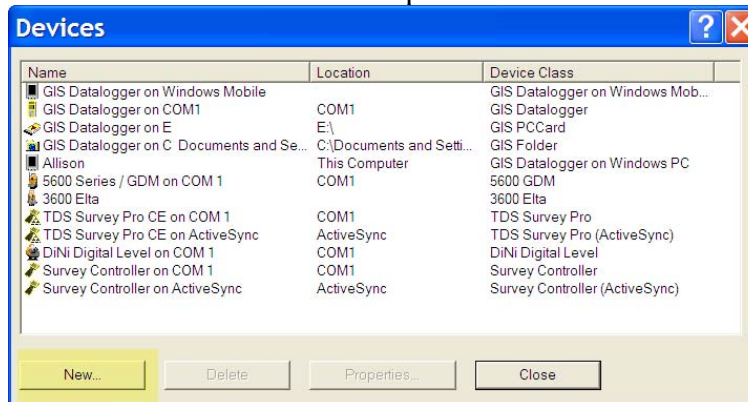
Click on UTILITIES/DATA TRANSFER



Click on Devices to setup a new GIS FOLDER




Click New to setup a new device



Choose GIS Folder from the list

- GIS Datalogger on Windows Mobile
- GIS Datalogger on Windows PC
- GIS E-mail Device
- GIS Folder**
- GIS PCCard
- GPS Receiver (4000 Series)
- GPS Receiver (R/SPS/5000 Series)
- Nikon / TS415
- SPR Data Recorder


Next hit BROWSE to browse to where the data is SAVED, then hit NEXT.



Select the folder to connect to:

Folder:

Choose TerraSync and version 3.xx then hit NEXT.




Specify the Type of files to be sent to this device:

Type:

Version:

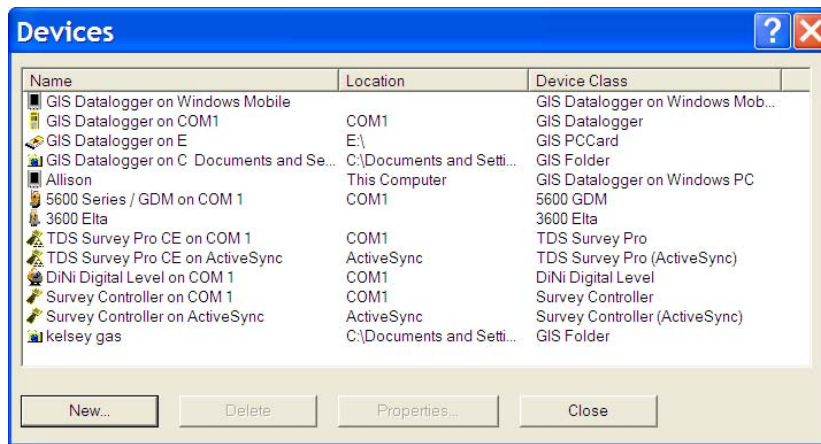
Type in a name for this folder, then it FINISH.



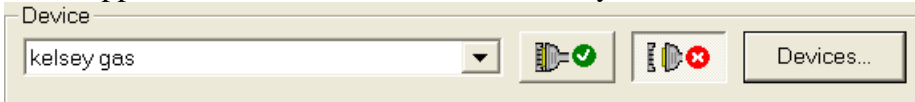
Specify a name for the device you have defined:

Name:

Hit CLOSE to go back to the main screen for Data Transfer.

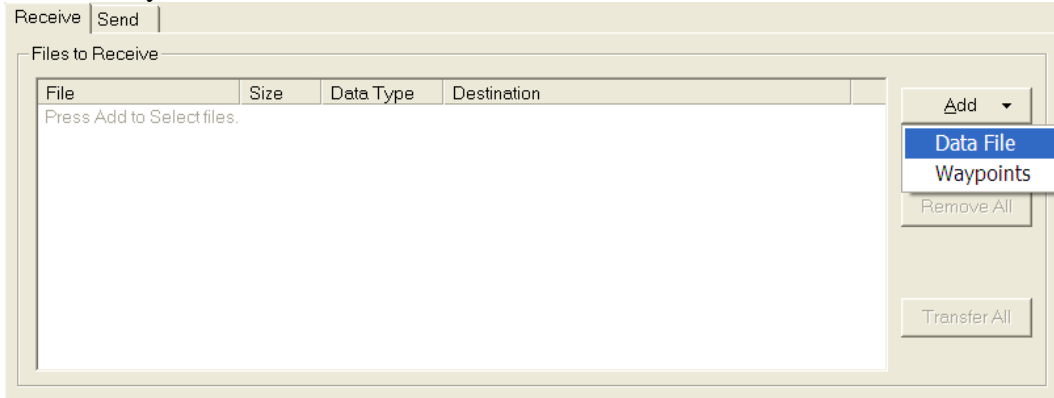


In the upper left hand corner of Data Transfer your new device should be listed.

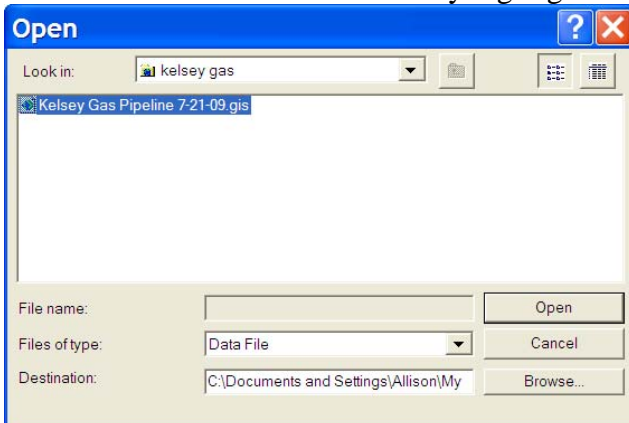


Hit the Green Check mark to connect to the device.

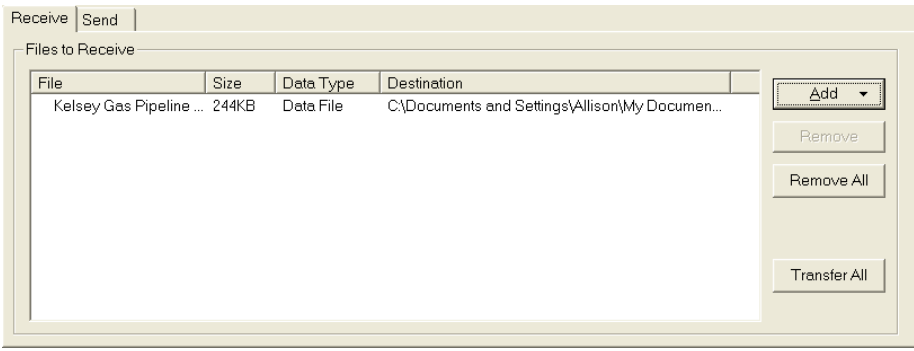
Make sure you are on the RECEIVE tab and then hit the ADD button and select DATA FILES.



Your file will be shown and already highlighted. Hit the OPEN button.



Next the file will be listed under the Files to Receive and you will hit TRANSFER ALL.



A message will be displayed saying your file was transferred.

